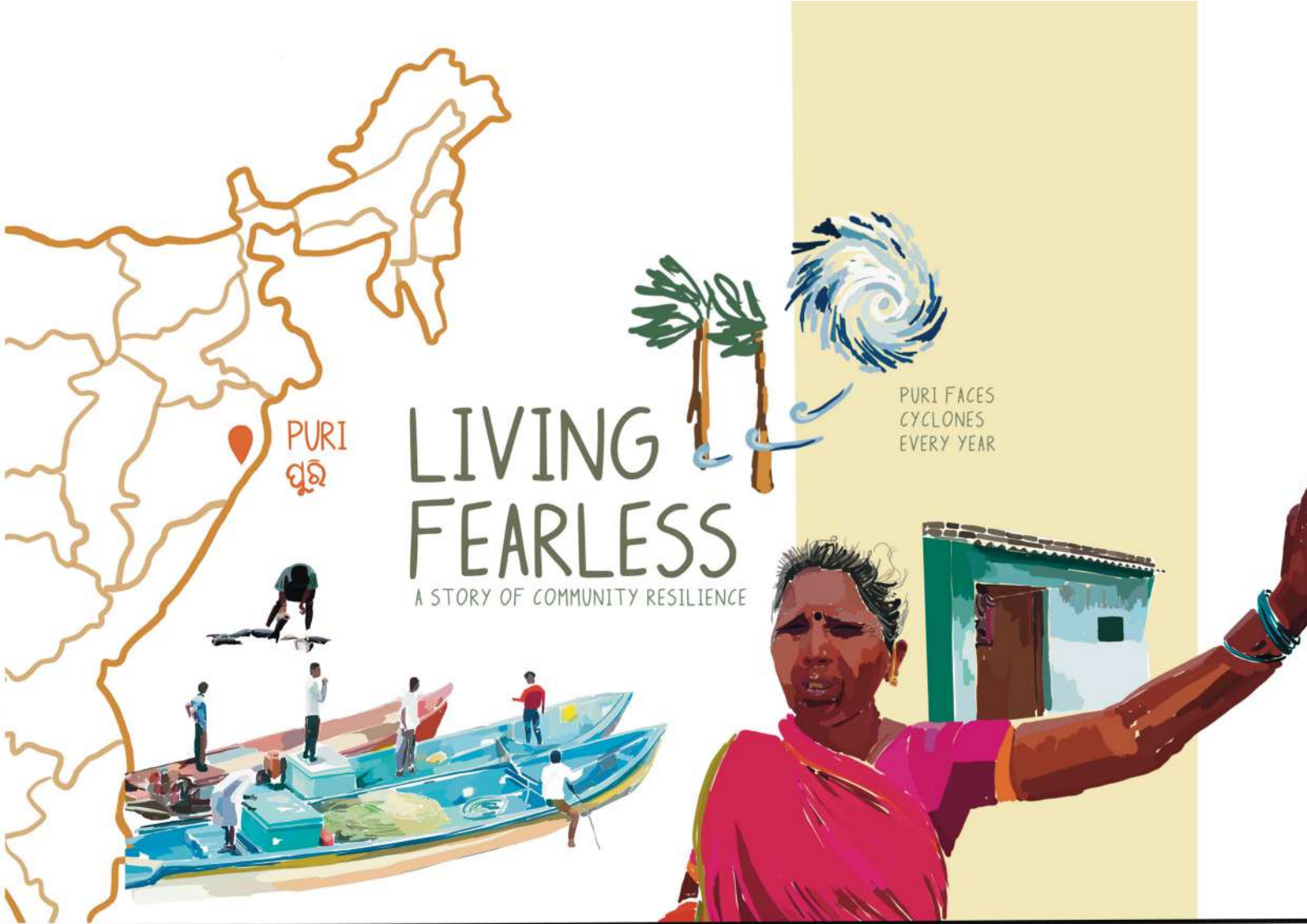


LIVING FEARLESS

A STORY OF 360° COMMUNITY RESILIENCE



OUR MISSION IS TO REVOLUTIONIZE DISASTER RISK ASSESSMENT AND PREPAREDNESS USING CUTTING-EDGE AI TECHNOLOGY, EXEMPLIFIED BY OUR FLAGSHIP PRODUCT, RESSOLV. OUR AI TECHNOLOGY HARNESSSES THE POWER OF DATA, GEOSPATIAL ANALYSIS, AND MACHINE LEARNING TO PROVIDE HYPER-LOCALIZED RISK ASSESSMENTS, ENSURING THAT COMMUNITIES ARE NOT JUST INFORMED BUT EMPOWERED. AS WE MOVE FORWARD, OUR INTENT IS CLEAR TO HARNESS TECHNOLOGY FOR THE BENEFIT OF SOCIETY AND SAFEGUARD THE WORLD'S VULNERABLE COMMUNITIES FROM THE GROWING THREAT OF CLIMATE-INDUCED DISASTERS.



PURI
ପୁରୀ

LIVING FEARLESS

A STORY OF COMMUNITY RESILIENCE

PURI FACES
CYCLONES
EVERY YEAR

AN AFTERNOON
IN PENTHAKATA, PURI



PRE-CYCLONE WARNING ⚠️
in 72 hours

WHAT TO DO:

1. FIX DOORS WINDOWS AND WATER LEAKAGES
2. TIGHTEN ROOF JOINTS IN CASE OF SLOPING ROOFS
3. TRIM OFF BRANCHES FROM NEARBY TREES

BARSHA AND HER DAUGHTER RIYA ARE
HAVING LUNCH AND SUDDENLY
THEIR PHONE BEEPS...



Knock ((
Knock



BETA, A MESSAGE SAYS
THERE'S A CYCLONE
COMING IN THREE DAYS.

MEANWHILE THE
VOLUNTEER STEPS IN
TO INFORM THEM
ABOUT THE UPCOMING
CYCLONE ...

OH NO! MY FRIEND
DOESN'T HAVE A PHONE
HOW WILL SHE KNOW?

VOLUNTEER DIDI
WILL INFORM HER
FAMILY.



WAIT, HOW DID YOU BOTH GET THIS INFORMATION?

OKAY! I ONLY HAVE 5 MINS TO EXPLAIN...

IT'S THROUGH AN INITIATIVE CALLED ResSolv™

IT MAPS THE NATURAL FEATURES OF AN AREA TO GIVE US SPECIFIC ACTIONS TO DEAL WITH A DISASTER

GEOGRAPHIC VULNERABILITY

TYPE OF HAZARD — PROXIMITY TO RIVER — SLOPE



AI BASED ROOF CLASSIFICATION



BLUE TARPULIN SHEETS COVERING DAMAGE



LIGHT GREY SHEET ROOFS ABESTOS OR CEMENT

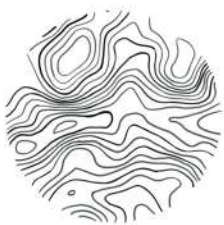


DAMAGED ROOF



RED CGI ROOFS

HYPER LOCAL RISK SCORING



GEOGRAPHICAL FACTORS



ROOF TYPE CLASSIFICATION



RISK SCORING
■ LOW ■ MEDIUM ■ HIGH

WOAH! THAT WAS A LOT, I DIDN'T UNDERSTAND MUCH..

RIYA, VOLUNTEER DIDI HAS TO WORK. LET HER GO!

IT'S OKAY, AUNTIE. KID, DON'T WORRY YOU'LL GET TO LEARN ALL THIS DURING NEXT WEEK'S CLIMATE LAB!

NOW I HAVE TO INFORM OTHERS ABOUT THE CYCLONE. BYE! STAY SAFE.

CHALO! WE'VE LOTS TO DO. LET'S PREPARE FOR THE CYCLONE.





AS THEY SECURE THEIR HOME, ARRIVAL OF THE CYCLONE COMES CLOSER...



BARSHA FOLLOWS THE STEPS AS PER THE 72 HOUR CYCLONE INSTRUCTIONS



CYCLONE ALERT
in 48 hr

- WHAT TO DO:
1. ALERT AUTHORITIES ABOUT ANY BROKEN ELECTRIC WIRES NEARBY
 2. AVOID GOING NEAR THE SEA/OCEAN
 3. PREPARE EMERGENCY SAFETY KIT

CYCLONE WARNING
in 24 hr

- WHAT TO DO:
1. BOARD UP GLASS WINDOWS
 2. ANCHOR ANYTHING THAT CAN FLY OFF
 3. STORE ENOUGH FOOD AND WATER



LANDFALL OUTLOOK
in 12 hours
EVACUATE ASAP
Take COVID precautions

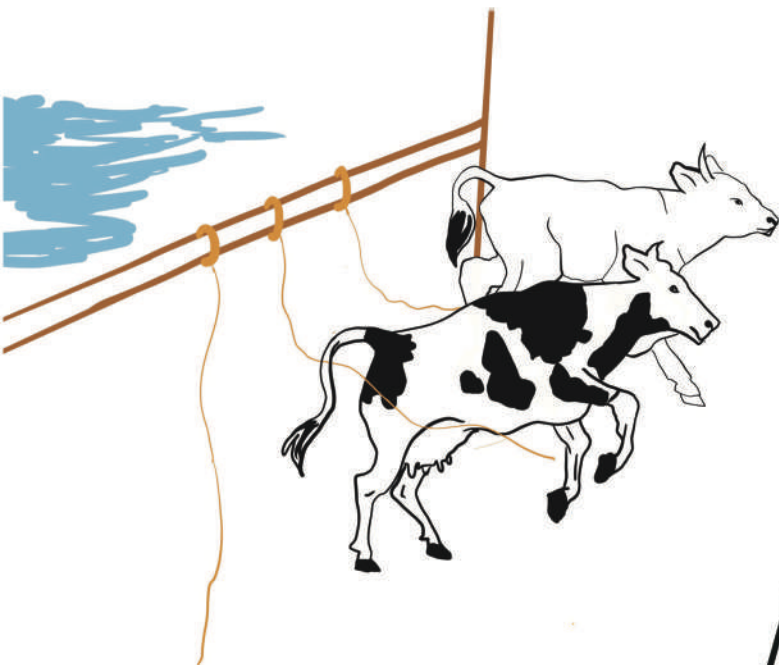


CYCLONE ARRIVES...



BARSHA AND RIYA WAIT IT OUT
IN THE CYCLONE SHELTER

AFTER THE CYCLONE, EVEN THOUGH BARSHA AND RIYA WERE SAFE,
THEY LOST THEIR TWO COWS...



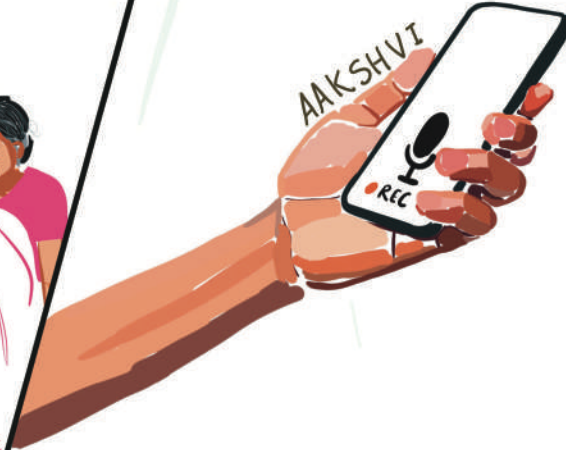
THE COWS WERE THEIR MAIN SOURCE OF LIVELIHOOD

OH NO! WHAT DO WE DO NOW?

I'LL RECORD IT IN MY PHONE.

HOW WOULD THAT WORK?

VOLUNTEER DIDI TOLD ME THAT I CAN JUST SPEAK INTO MY PHONE ABOUT OUR LOSS ON A PLATFORM CALLED 'AAKSHVI'.



LOSS IS RECORDED THROUGH VOICE NOTES IN OUR NATIVE LANGUAGE



AI TRANSLATES THIS TO THE ACTUAL LOSS INCURRED

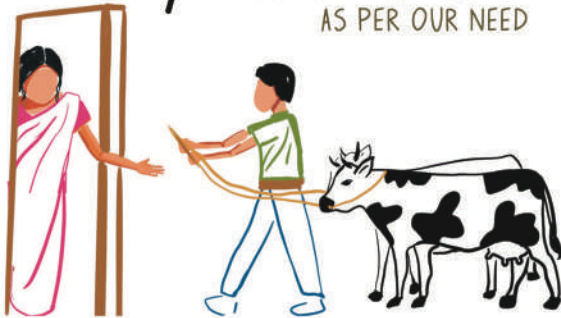


--- 2



--- 10,000

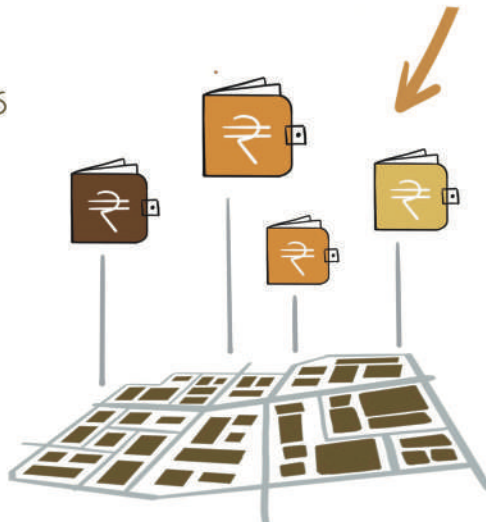
WE GET COMPENSATED AS PER OUR NEED



GETS STORED IN PERSONAL E-WALLETS



GOVT. GETS ACCESS TO THE DATA



AN AREA PROFILE OF ALL LOSSES IS PREPARED ON THE LOSS PLATFORM

THEY RETURN AND GET BACK TO THEIR LIVES...



BARSHA QUICKLY RESUMES HER WORK AND ALSO HELPS OTHER PEOPLE IN NEED

BYE BETA! SEE YOU AFTER SCHOOL



BYE MA!



BUT... RIYA'S CURIOSITY DOESN'T END HERE



SHE JOINS THE COMMUNITY CLIMATE LAB AND LEARNS ALL ABOUT WHAT AFFECTS HER COMMUNITY AND HOW TO ADDRESS IT...

HEY!



“IT’S USEFUL TO KNOW THAT A CYCLONE IS COMING.
BUT, IT’D BE SO MUCH MORE USEFUL TO KNOW HOW THIS
CYCLONE WOULD AFFECT MY HOME.”

SATYAVATI, WHO BELONGS TO A FISHING COMMUNITY IN PENTHAKATA (PURI), RUNS A MAKESHIFT FOOD STALL. DURING CYCLONE NIVAR (2020), HER HOUSE AND HER FOOD STALL WERE BOTH DESTROYED. THE DESTRUCTION OF THE STALL HIT THE HARDEST AS IT WAS HER PRIMARY SOURCE OF INCOME.

DURING CYCLONE YAAS (2021), HOWEVER, IT WAS A DIFFERENT STORY. THE RESSOLV AI MODEL WAS RUN BEFORE THE CYCLONE AND THE RISK INFORMATION WAS RECEIVED. USING THE RISK MAPS, THE VULNERABLE AREAS WERE IDENTIFIED AND CYCLONE ADVISORIES IN ODIA AND TELUGU WERE PREPARED ACCORDINGLY.

THE ADVISORIES WERE SENT TO 1000+ FAMILIES PENTHAKATA. LIKE MANY IN HER COMMUNITY, SATYAVATI ALSO RECEIVED ADVISORIES FROM RESSOLV WITH ACTION POINTS A DAY BEFORE THE CYCLONE AND WAS ABLE TO SECURE HER BELONGINGS BEFOREHAND. THE ASSETS IN HER STALL WERE SHIFTED TO A NEIGHBOURING HOUSE, WHICH WAS STURDIER THAN HER OWN HOUSE. THIS WAY, SHE WAS ABLE TO GET BACK ON HER FEET IMMEDIATELY AFTER THE CYCLONE.