

# Resilience AI



**Resilience AI**

Building Resilience  
at every step



[www.resilience360.ai](http://www.resilience360.ai)

Risk Management, that is based on Unverified geospatial analytics, Missing built-environment intelligence, Multiple standards and Statistical models are conventional drills. This drill doesn't provide **Access, Accuracy, Actionability** for business and government to prepare its people, assets, business for disaster and environment impact.

**Resilience360** is the **first enterprise software** that upstreams disaster and environment risk for both business and governments as a Life Cycle Management (LCM) and not in silos.

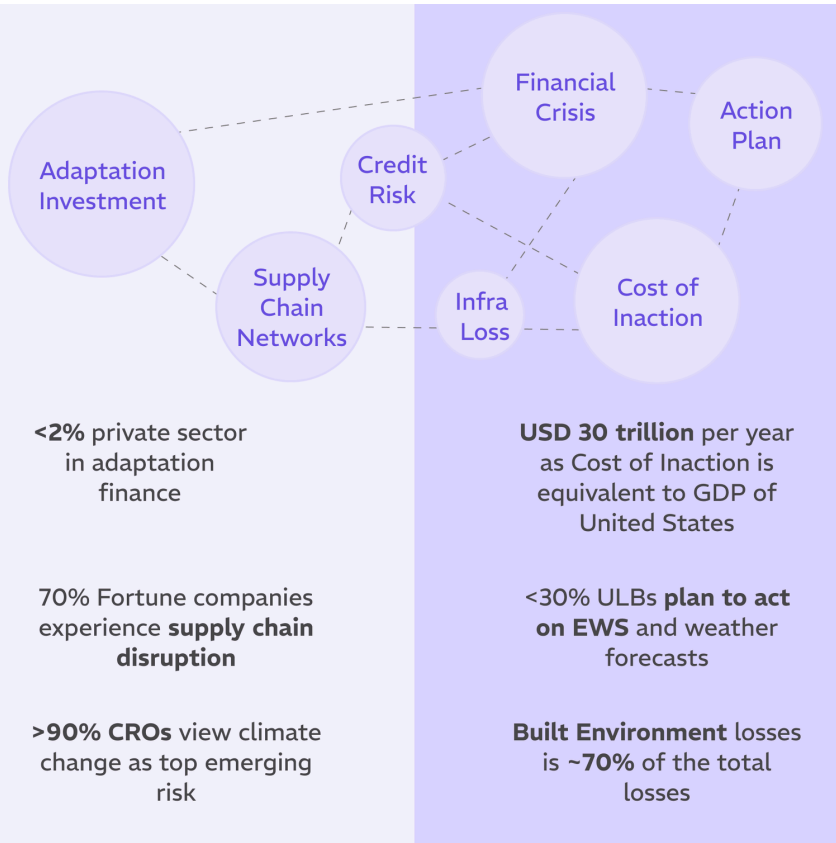
**Resilience AI** is mainstreaming **Risk to Resilience**, beginning with Cyclone Yaas, a setback for People, Planet, Profit

**Our Vision** is Building Resilience at every step.

**The Mission** is to provide low-cost, science-based, factually-accurate, high-impact technology to prepare 60% unaccounted buildings and business.

# Why Resilience 360?

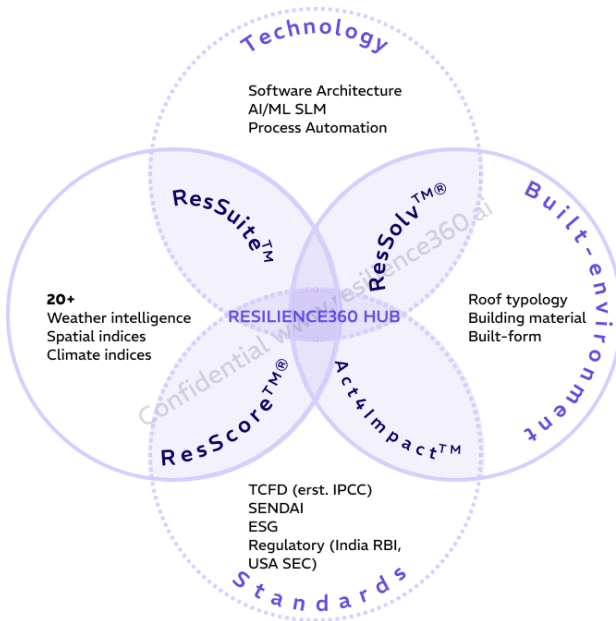
## Private Sector



## Public Sector



# What is Resilience 360?



- Verified building risk record at >90% accuracy; any format, anywhere.
- Risk exposure intel in 8 hours per asset; run it for large volume.
- Single-window, multi-standard business preparedness test.
- Compliance with root-cause analysis.
- 9-18 days to automate your workflow with API.
- 4-8 months to digitize disaster risk management with Software

# Enterprise Risk Life Cycle Management using Resilience360 suite of products

## MEASURE

**Baseline Risk exposure  
for Buildings to Business**  
(built-environment and company/  
city baseline)

## COMPLY

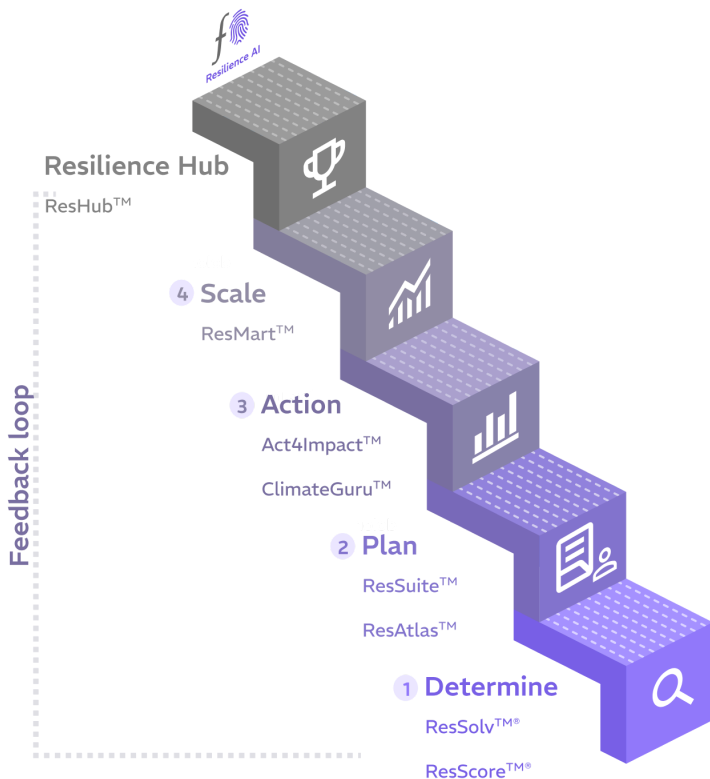
**Diagnose and Analyse  
root cause of Risk**  
(insights, report)

## MONITOR

**Reduce Risk with controls  
and compliance**  
(people, asset, business)

## MANAGE

**Digitized  
Mitigation Action**  
(action, multiply)



# ...→ ResSolv™

ResSolv is a climate-risk determination module, which uses three decades of roof-top architecture, built environment, artificial intelligence (AI) and Machine Learning based classification.

**20+**

Factors applied using  
Machine Learning

**25+**

Realtime  
climate events

**720k+**

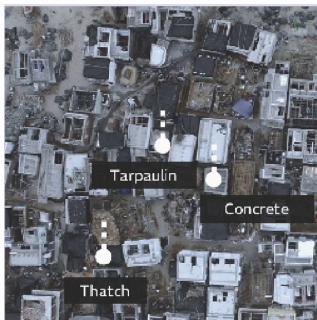
Verified  
building

**>90%**

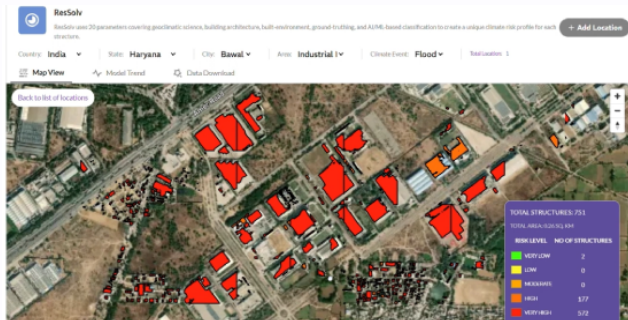
Confidence

**<8 hr**

Run-Time



Every roof is a unique fingerprint ...

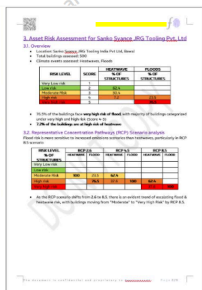
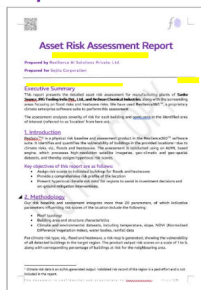


... which translates to every building's unique climate risk profile

# ResSuite™

ResSuite™, is a Generative AI based report of analytics, which covers climate risk diagnosis (root cause analysis), biodiversity atlas, value at risk, composite vulnerability index.

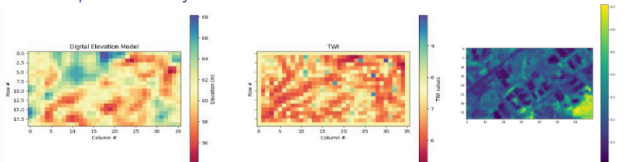
## Manufacturing locations of Global Corporation



Risk Map of the Building and Neighbourhood  
Flood Risk Map Heat Risk Map



Detailed parametric analysis



# ...> ResScore™

ResScore™ is an index, which evaluates climate resilience, covering both sustainability and climate related risks based on 6 pillars



Strategy



Social



Physical



Environment



Economic



Crisis



Institutionalized baseline assessment for companies intersecting across standards and frameworks



**SEDAI FRAMEWORK**  
FOR DISASTER RISK REDUCTION 2015-2030



## Digitised for ease of adoption

Using hyperlocal database, it acts as a starting point to assess climate preparedness at an organization level with insights from 55+ vulnerability parameters



# Footprint



Demos Conducted

**10+**

Tam Size (Employees)

**15+**

Paid Pilots



Near-committment orders

**100+**

Network of Fellows

**30+**

Cities where model  
has been run

# USBRL

## CASE STUDY 01

The Konkan Railway Corporation Limited (KRCL) and Resilience AI worked together to draft a disaster risk report for the Udhampur-Srinagar-Baramulla Railway Link (USBRL), a railway line of national importance that is built in a geographically challenging region.

### OPPORTUNITY

The USBRL is a vital transportation link in J&K and faces constant threats from natural disasters, posing significant risk to the railway line's infrastructure, stations, and surrounding communities.

### SOLUTION

Our AI-enabled tool, ResSolv, was run to utilize high-resolution satellite imagery, meteorological data, & other relevant parameters to assess vulnerabilities within a 1 km buffer zone around each of the railway stations.

### IMPACT

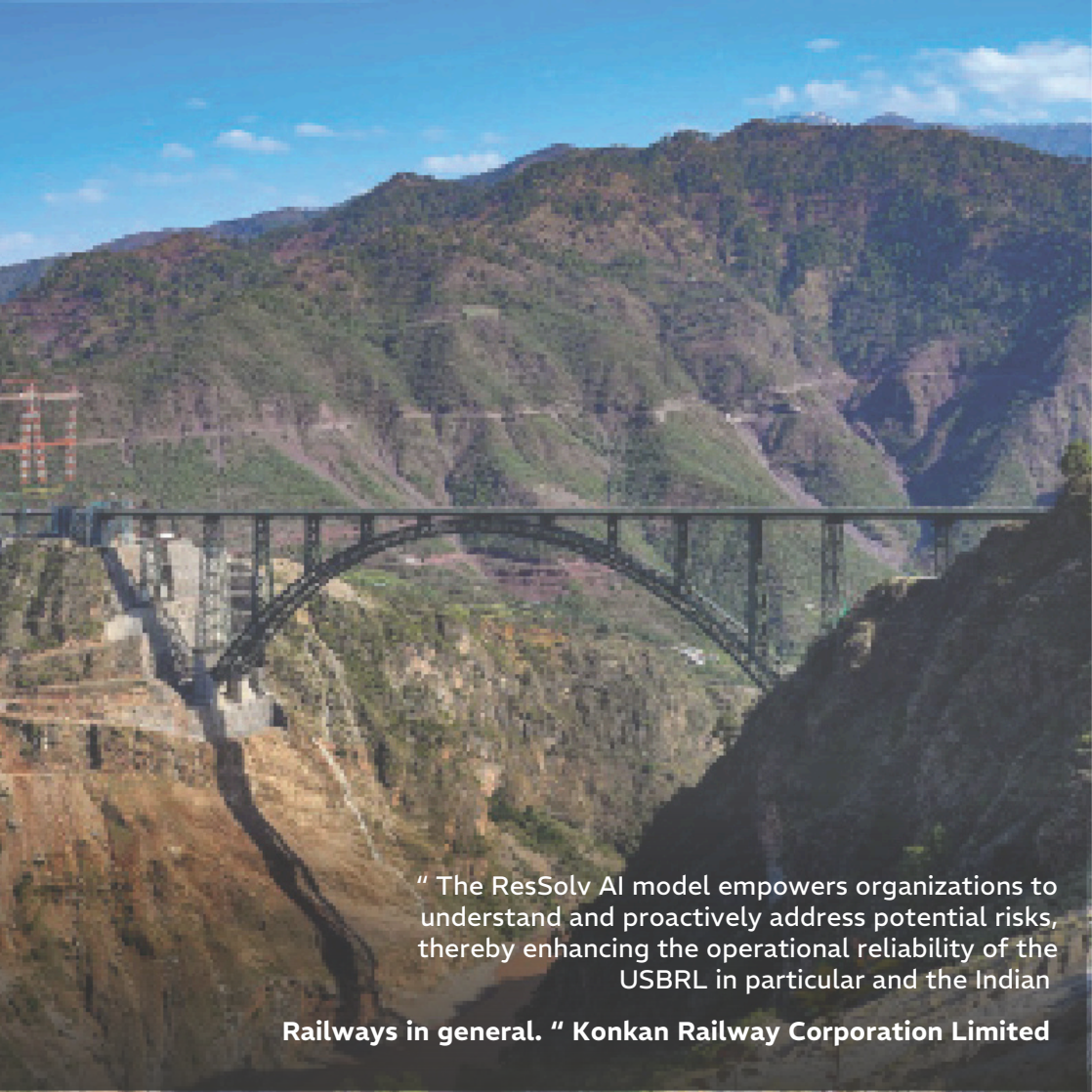
- Prioritized Risk Mitigation
- Infrastructure Protection
- Data-driven Decision Making

**2 Years**

360° climate  
planning timespan

**13.5 hours**

Projected runtime from  
pilot order initiation



" The ResSolv AI model empowers organizations to understand and proactively address potential risks, thereby enhancing the operational reliability of the USBRL in particular and the Indian

**Railways in general. " Konkan Railway Corporation Limited**



# Vivekananda Camp

## CASE STUDY 02

The Chintan Environmental Research and Action Group worked closely with Resilience AI to deploy innovative solutions at the climate-health nexus, particularly in implementing AI models for assessing heatwave impacts on vulnerable communities in Vivekanand Camp, Delhi.

### OPPORTUNITY

Hyper-local heat disparity. Low-income, highly dense areas such as Vivekanand Camp are up to 6° C hotter than the rest of the city.

### SOLUTION

AI for Extreme Weather - Resilience used the AI-generated maps to find high-risk homes, prioritize outreach for early warning and preparation, and demonstrate the significance of heat risks to locals.

### IMPACT

Once at-risk households were identified, the team began outreach to prepare for the upcoming heatwave and implement solutions. Cool roof prototypes were fabricated and tested, with one model resulting in 12°C lower indoor temperatures.

**3 Years**

Product development  
timespan

**5 hours**

Projected runtime from  
pilot order initiation



" It is true that the repercussions for heatwaves are long felt and there is pressing need for AI tools such as ResSolv to help understand the hyperlocal risks of communities. "

**Bharti Chaturvedi**

Director, Chintan Environmental Research and Action Group

Gaya

15kms from Gaya



Bodhi Gaya

" BSDMA is the first SDMA to leverage an AI-based tool as part of a CDMP for the assessment of socio-economic vulnerability & risk at a hyper-local, building level. "

**Bihar State Disaster Management Authority**

# Gaya CDMP

## CASE STUDY 03

Resilience AI was engaged by the Bihar State Disaster Management Authority (BSDMA) to contribute to the City Disaster Management Plans (CDMP) for Gaya, an important tourist city in Bihar.

### OPPORTUNITY

Traditional disaster response mechanisms lack precision in identifying hyper-local risk zones, leading to generic alerts and inefficient evacuation plans. This results in longer recovery times and greater disruptions.

### SOLUTION

Resilience AI team worked with BSDMA to leverage ResSolv in the preparation of the Gaya City Disaster Management Plan. Advantages include enhanced Early Warning Systems (EWS) and optimized resource allocation, evacuation & recovery planning.

### IMPACT

The focal point of this output was the creation of a modern-day CDMP that works to reduce disaster risks at a household level, through a synergistic integration of advanced technologies and community-centric approaches.

**2 Years**

360° climate  
planning timespan

**48 hours**

Projected runtime from  
pilot order initiation

# Founders Story

**Resilience AI was officially incorporated in November 2023.**

Samhita is from the northeastern belt of India, which experiences significant loss of assets and livelihood every year due to floods. "While nature may be seasonally unkind, resilience doesn't need to be seasonal. Climate resilience should be a 365-day conversation." She co-founded Resilience AI with the aim of building climate resilience with technology.

Sundeeep is a 5th generation farmer. Agriculture faces inevitable losses due to climate change. Over 18 years he has set up Climate and ESG business units and Data science centre of excellence to give future generations a fighting chance with nextGen climate solutions.

Dr. Anshu and Dr. Manu are urban planners serving dignity in disaster globally for 30 years. They have been awarded the United Nation Sasakawa Award and the Subhas Chandra Bose Aapda Prabandhan Puraskar by the Government of India for building resilience in communities exposed to disasters and climate change impact.

Together, we aim to provide governments, climate agencies and private corporations with credible and co-owned intelligence to build their resilience to climate-induced events.

Resilience360  
1.0

Resilience AI  
Solution Pvt. Ltd.  
Incorporated

Seed capital  
kalaari  
JAVA CAPITAL

Resilience360 2.0  
two product  
patent

1

2

3

4

Year

2022

2023

2024

2025

Mentions



Cornell University



Inc42

Spotlight



Partnerships



Microsoft  
for Startups



BRIDGES  
FOR  
ENTERPRISE





**Resilience AI**

**Building Resilience  
at every step**



[www.resilience360.ai](http://www.resilience360.ai)